

# PROSTATE ARTERY EMBOLIZATION A NEW AND EFFECTIVE TREATMENT FOR BPH

## BENIGN PROSTATIC HYPERPLASIA (BPH) IS COMMON

It affects **50% OF ALL MEN**  
**51-60 YEARS OLD**   
and **90% OF MEN**  
**OLDER THAN 80<sup>1</sup>** 



Up to **95% OF MEN** with moderate BPH symptoms **ARE UNHAPPY** and don't want to spend the rest of their lives with these symptoms<sup>2</sup>

Left untreated, **BPH CAN LEAD TO COMPLICATIONS** including infection, renal failure and urinary, bladder or kidney stones<sup>1</sup>



The number of men with **BPH IS EXPECTED TO INCREASE** significantly in the next few decades due to a growing elderly population and increasing life expectancy. The number of people over 80 years old in the U.S. will more than double in three decades, from 9.3 million in 2000 to 19.5 million in 2030.

### RISK FACTORS FOR BPH INCLUDE:

- » Being over age 40
- » A family history of BPH
- » Obesity
- » Lack of physical activity or exercise
- » Erectile dysfunction
- » Cardiovascular and heart and diseases
- » Type 2 diabetes

*The physicians of RMG of Santa Cruz are among the region's most experienced in performing the PAE procedure.*

**LEARN MORE! Call us at (831) 476-7711.**



[www.rmgsc.com](http://www.rmgsc.com)

1. Barry M, Roehrborn C. Management of benign prostatic hyperplasia. Annu Rev Med. 1997;48:77-189 2. Bertaccini A, Vassallo F, Martino F, Luzzi L, Rossetti S, Di Silverio F, et al. Symptoms, bothersomeness and quality of life in patients with LUTS suggestive of BPH. Eur Urol. 2001;40 (Suppl 1):16. 3. Source: UrologyHealth.org 4. Source: Medical News Today 5. Rassweiler J1, Teber D, Kuntz R, Hofmann R. Eur Urol. 2006 Nov;50(5):969-79; discussion 980. Epub 2006 Jan 30 6. Cardiovasc Intervent Radiol. 2017 Nov;40(11):1694-1697. doi: 10.1007/s00270-017-1700-7. Epub 2017 May 30. Cost Analysis of Prostate Artery Embolization (PAE) and Transurethral Resection of the Prostate (TURP) in the Treatment of Benign Prostatic Hyperplasia. Bagla S1,2, Smiriottopoulos J3, Orlando J4, Pichowiak R4.

## TREATMENT FOR BPH

For men whose symptoms are not adequately controlled with medical management and lifestyle changes, transurethral resection of the prostate (TURP) is the most often used surgical remedy.

- ▶ **150,000 TURP PROCEDURES** are performed each year<sup>3</sup>
- ▶ The cost of a TURP procedure ranges from **\$4,000 TO IN EXCESS OF \$8,500** (Healthcare Blue Book)
- ▶ To ensure a better recovery, men undergoing surgery should **AVOID SEXUAL INTERCOURSE FOR up to 2 MONTHS<sup>4</sup>**

## TURP PROCEDURE SIDE EFFECTS:<sup>4</sup>

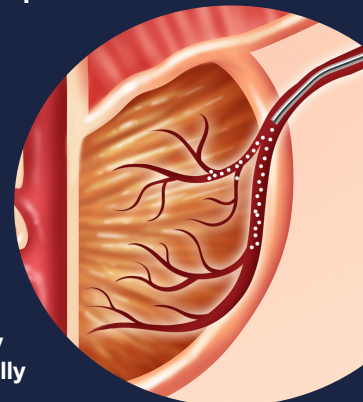
- » Excessive bleeding and inflammation
- » Chronic urinary problems, especially incontinence
- » Urinary tract infections
- » Retrograde ejaculation
- » Prostate re-growth or scarring
- » Impotence/erectile dysfunction
- » A split stream of urine caused by urethral narrowing

Up to **14.5%** of men who have the TURP procedure will **REQUIRE FURTHER SURGERY WITHIN 5 YEARS<sup>5</sup>**



## A NEW AND LESS INVASIVE ALTERNATIVE FOR TREATING BPH PROSTATE ARTERY EMBOLIZATION:

- » About 1/3 the cost of a TURP procedure<sup>6</sup>
- » High success rate (75-95%)
- » No hospitalization required
- » Few reported side effects
- » No anesthesia needed
- » Shorter recovery
- » Minimal pain



## THE PAE PROCEDURE

PAE is an interventional radiology procedure performed by a specially trained physician using imaging guidance. Tiny microparticles are injected via catheter into the microvasculature feeding the prostate. The reduced blood flow causes the prostate to shrink and symptoms are relieved.